

Band Pass Filters VHF

200 round cavity

Single or double cavity filters are implemented using 200 round cavities in the VHF range. Optimum performance is achieved through a rugged construction.



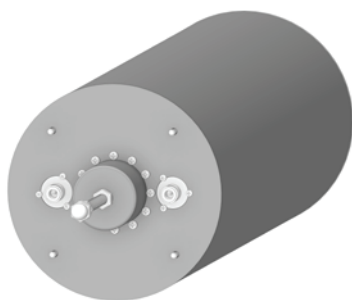
Electrical Specifications

Frequency band:	118 - 137 MHz
Impedance:	50 Ω
Max Power:	200W CW
Insertion loss:	Adjustable window coupling, rotating loops.

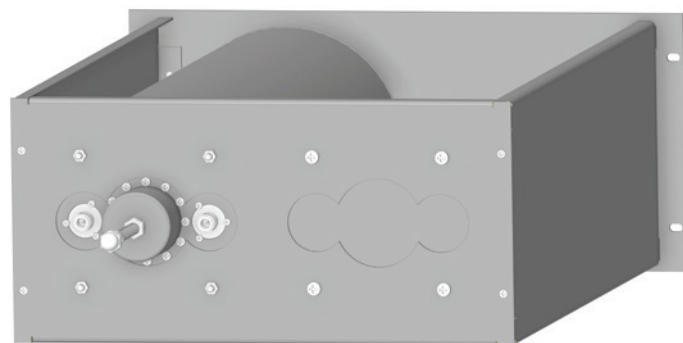
Mechanical Specifications

Connector Type:	N Female
Dimensions:	19" rack, 5HU, depth 625 mm
Operating temp.:	-10°C to +55°C
Tuning method:	Rotary knob, non telescopic movement

Band Pass Filters	Attenuation	Thermal Stability (ppm°C)	Input Power (CW)
FPB200-V/1 F02LC200M10Sxxxx	15dB \pm 500 KHz 1dB I.L.	3	200W
FPB200-V/1-1 F02LC200M1CDxxxx	15dB \pm 500 KHz 1dB I.L.	3	200W
FPB200-V/2 F02LC200M20Sxxxx	30dB \pm 500 KHz 2dB I.L.	3	200W



AST-0152
F05LC200M10Sxxxx



FPB200-V/1