

Band Pass Filters UHF

100 round cavity

Single cavity filters and combiners are implemented using 100 mm round cavities in the 225 – 400 MHz UHF range.

Optimum performance is achieved through a rugged construction.



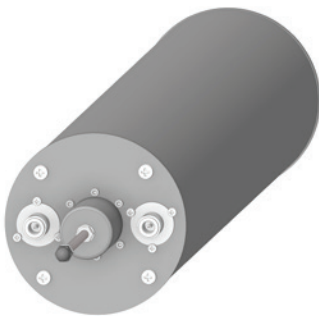
Electrical Specifications

Frequency band:	225 - 400 MHz
Impedance:	50 Ω
Max Power:	100W CW
Insertion loss:	Adjustable, rotating loops

Mechanical Specifications

Connector Type:	N Female
Dimensions:	19" rack, 4HU, depth 620 mm
Operating temp.:	-10°C to +55°C
Tuning method:	Rotary knob, telescopic movement

Model	Attenuation	Thermal Stability (ppm°C)	Input Power (CW)
FPB100-U/1 F02UC100M10Sxxxx	12dB \pm 0.75%Fo 1dB I.L.	5	100W
FPB100-U/1-1 F02UC100M20Sxxxx	12dB \pm 0.75%Fo 1dB I.L.	5	100W
FPB100-U/2 F02UC100M1CDxxxx	24dB \pm 0.75%Fo 2dB I.L.	5	100W



AST-0149
F05UC100M10SXXXX



FPB100-U/1