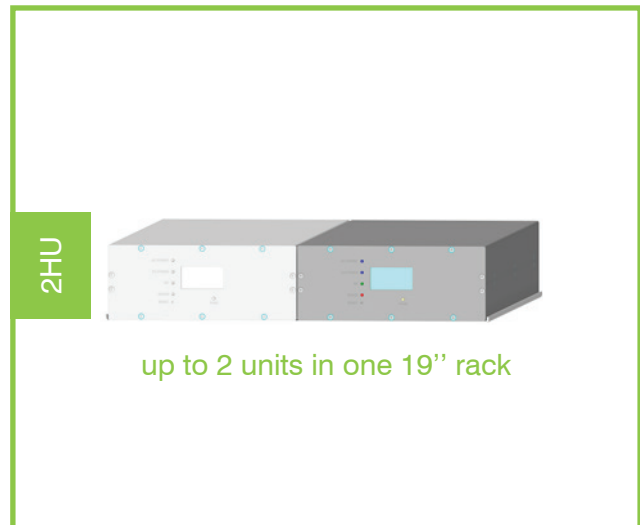


Automatic Tuning Band Pass Filters VHF

085 double cavity window coupled

2 units height, window coupled double cavity automatic tuning filters are a key factor when space is limited. High selectivity, extended frequency range and fast tuning time allow for easy operation on the field. The independent tuning capability and accuracy offer optimum software controlled matching performance. Customized control interfaces available.



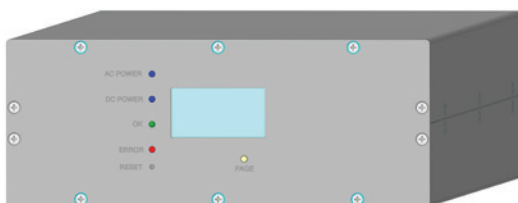
Electrical Specifications

Frequency band:	112 - 156 MHz
Impedance:	50 Ω
Max Power:	50W CW
Interfaces:	Ethernet, RS485 or RS422

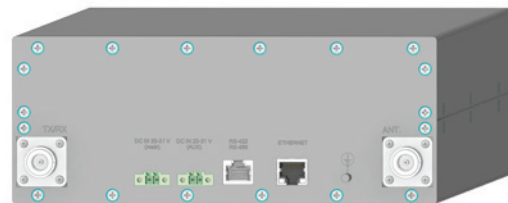
Mechanical Specifications

Connector Type:	N Female
Dimensions (VHF):	1/2 19" rack, 2HU depth. 580 mm
Operating temp.:	-10°C to +55°C
Tuning method:	Automatic, telescopic movement

Automatic Band Pass Filter	VSWR	Tuning time	Insertion Loss	Selectivity
FPBA085-V/2 F02ER085A1WDxxxx	< 1.6:1	Typ. 7 Sec.	< 2dB	> 20 dB @ $\pm 0.4\% f_0$ > 35 dB @ $\pm 1\% f_0$



FPBA085-V/2
front view



FPBA085-V/2
rear view