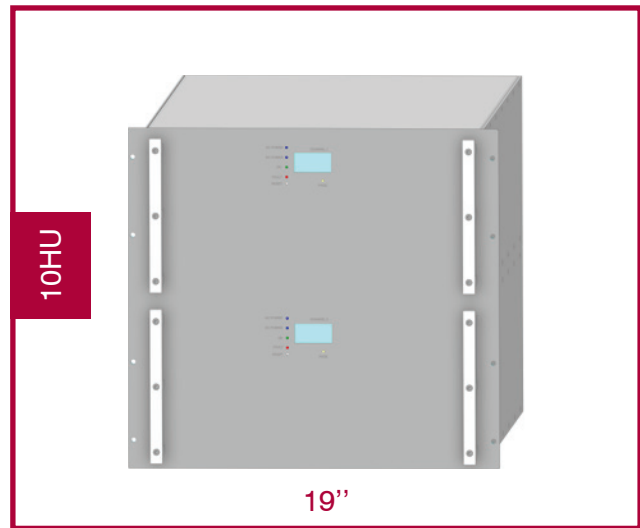


Automatic Tuning Combiner VHF

STAR 210 double cavity

Combiners allow several radio channels to operate at one site sharing a common antenna. Automatic tuning combiners are a key factor in emergencies, as channels can be changed very quickly from remote. High selectivity, extended frequency range and fast tuning time allow for easy operation on the field. Customized control interfaces available.



Electrical Specifications

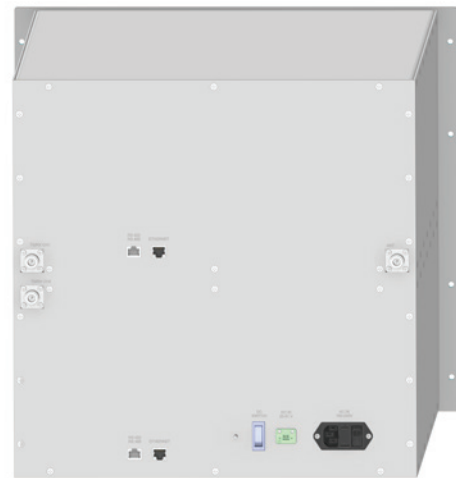
Frequency band:	112 - 156 MHz
Impedance:	50 Ω
Max Power:	200W CW
Interfaces:	Ethernet, RS485 or RS422

Connector Type:	N Female
Dimensions:	19" rack, 10HU, depth. 690 mm
Operating temp.:	-10°C to +55°C
Tuning method:	Automatic, telescopic movement

Automatic Combiner	VSWR	Tuning time	Insertion Loss	Selectivity
MCPSA210-V/2-2 F06ES210A2SDxxxx	< 1.6:1	Typ. 7 Sec.	< 2dB	> 30 dB @ \pm 0.4%



MCPSA210-V/2-2
front view



MCPSA210-V/2-2
rear view